

Hello again!

Wir sinds wieder! 🙌

Das World Wide Web



Frankreich

Schweiz

Österreich

Liechtenstein

Slowenien

Kroatien

Paris

Mannheim

Nürnberg

Karlsruhe

Stuttgart

Straßburg

Augsburg

München

Salzburg

Zürich

Bern

Graz

Tours

GERN

Limoges

Clermont-Ferrand

Lyon

Como

Mailand

Verona

Venedig

Triest

Padua

Grenoble

Turin

Genua

Bologna

San Marino

Rimini

Zadar

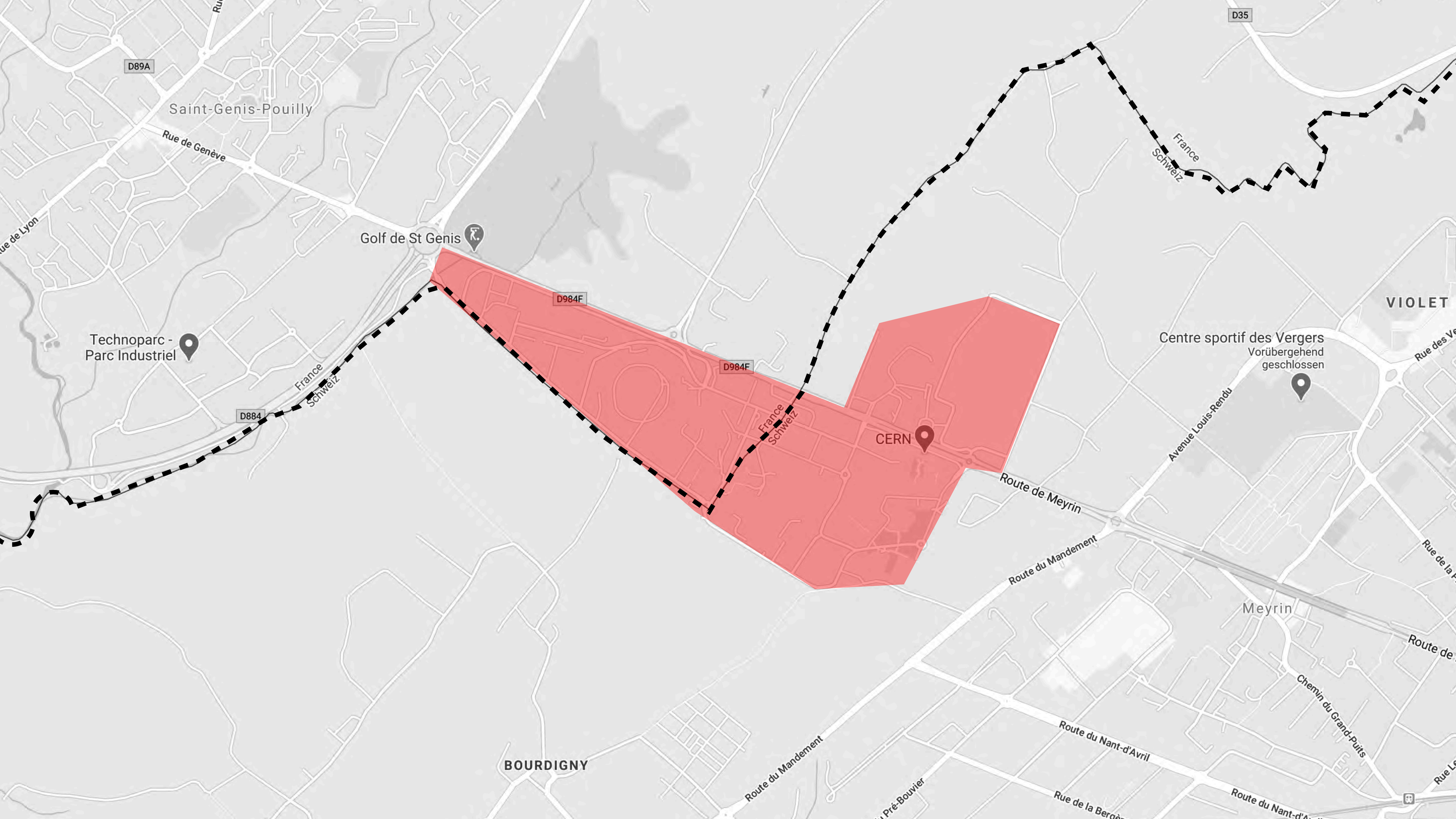
Toulouse

Montpellier

Monaco

Pisa

Florenz



D89A

Saint-Genis-Pouilly

Rue de Genève

Golf de St Genis

D984F

Technoparc -
Parc Industriel

D884

France
Schweiz

D984F

France
Schweiz

CERN

D35

France
Schweiz

VIOLET

Centre sportif des Vergers
Vorübergehend
geschlossen

Avenue Louis-Rendu

Route de Meyrin

Route du Mandement

Meyrin

BOURDIGNY

Route du Mandement

Route du Nant-d'Avril

Route du Nant-d'Avril

Chemin du Grand-Puits

Route de

Rue de la P

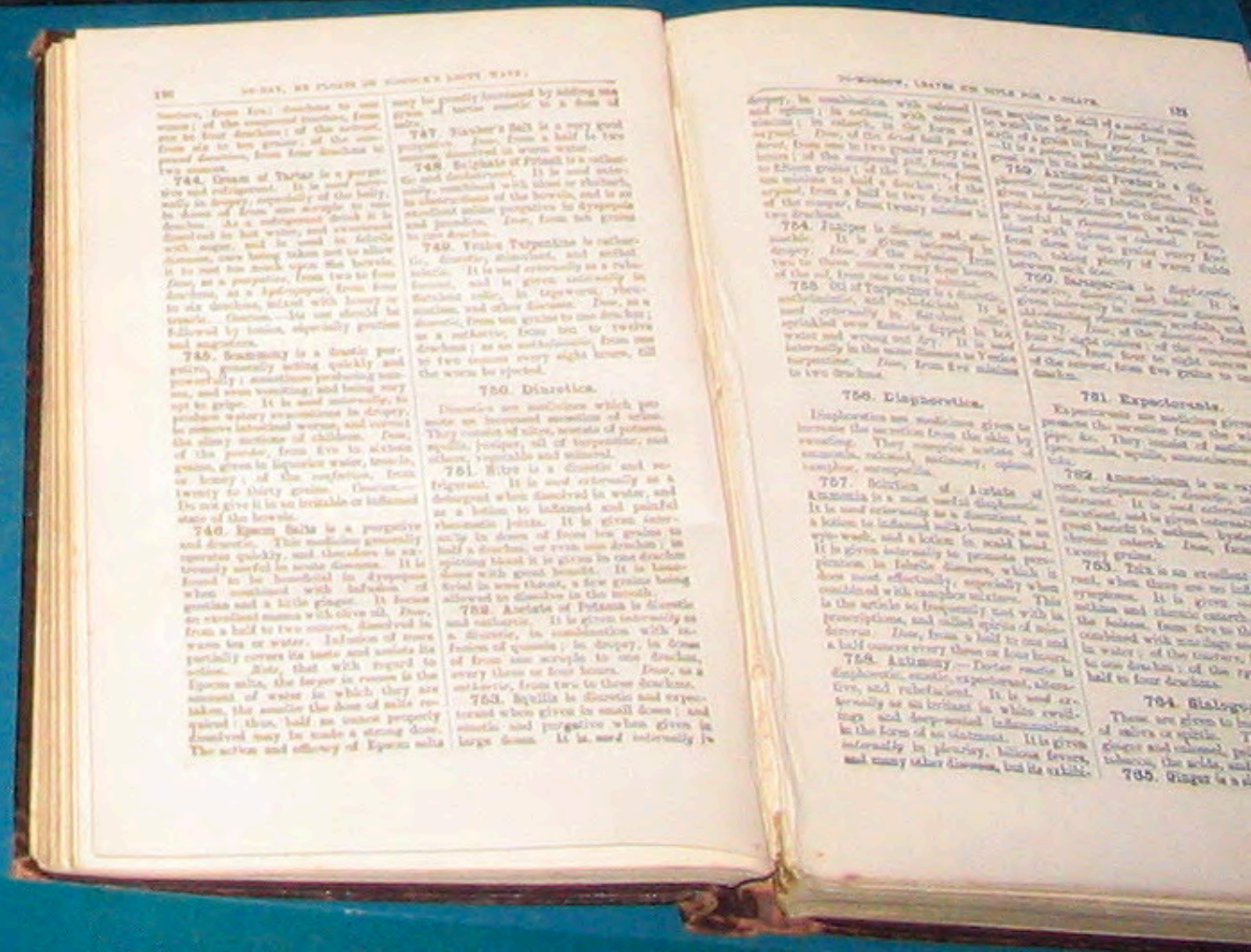
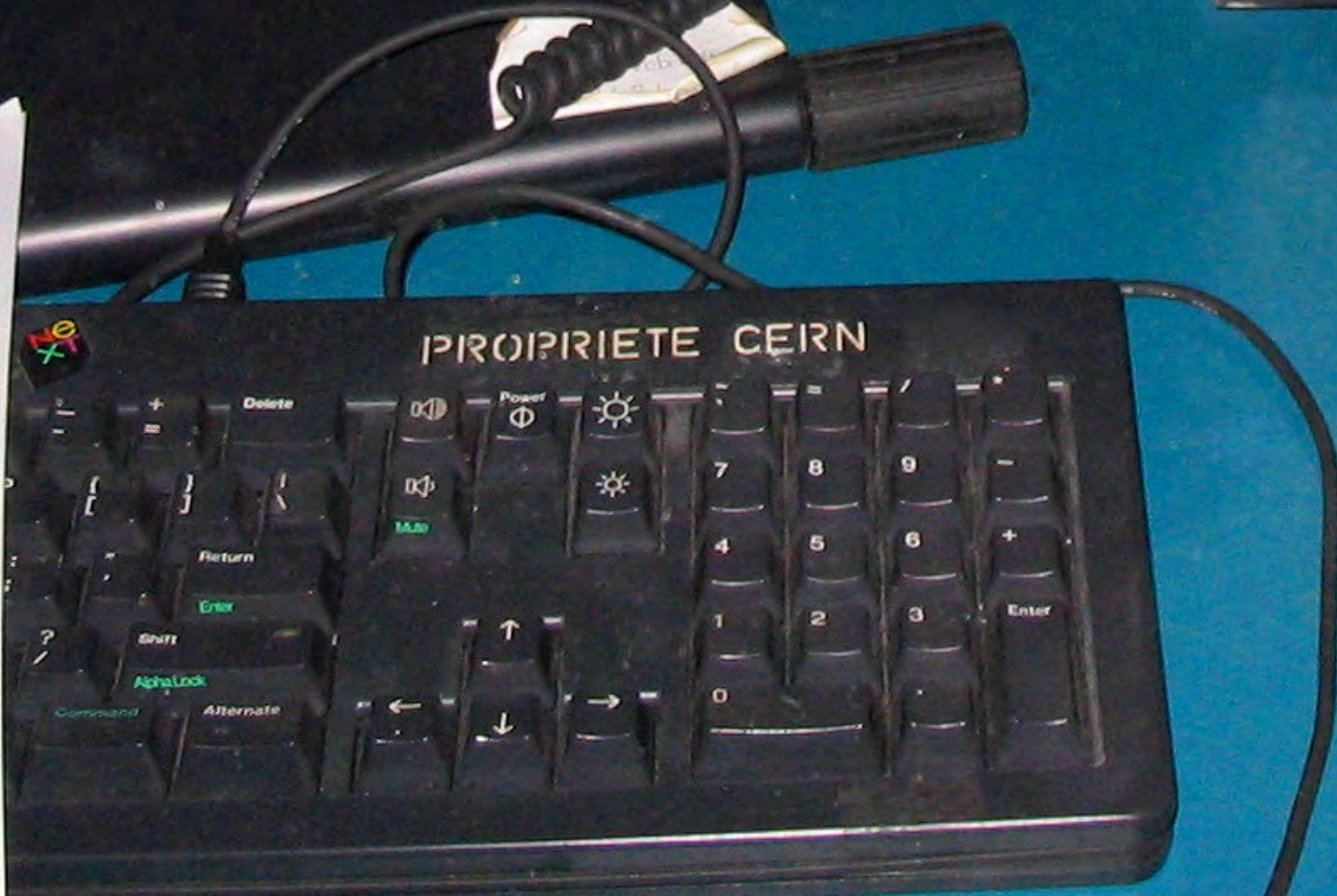
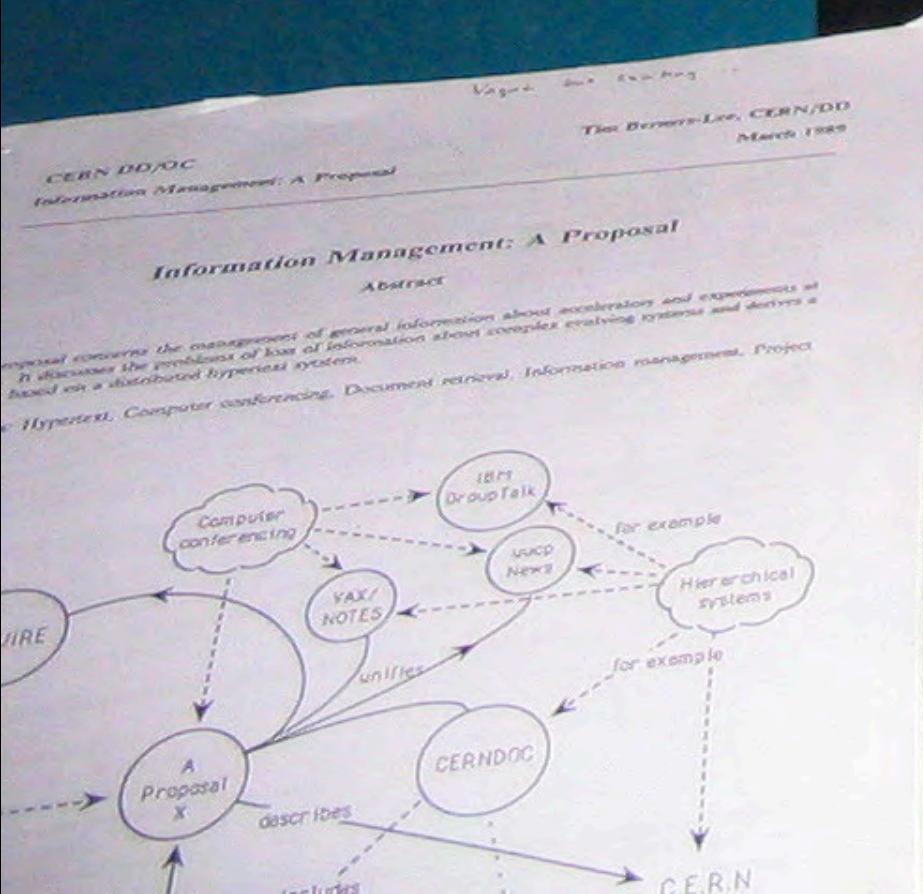
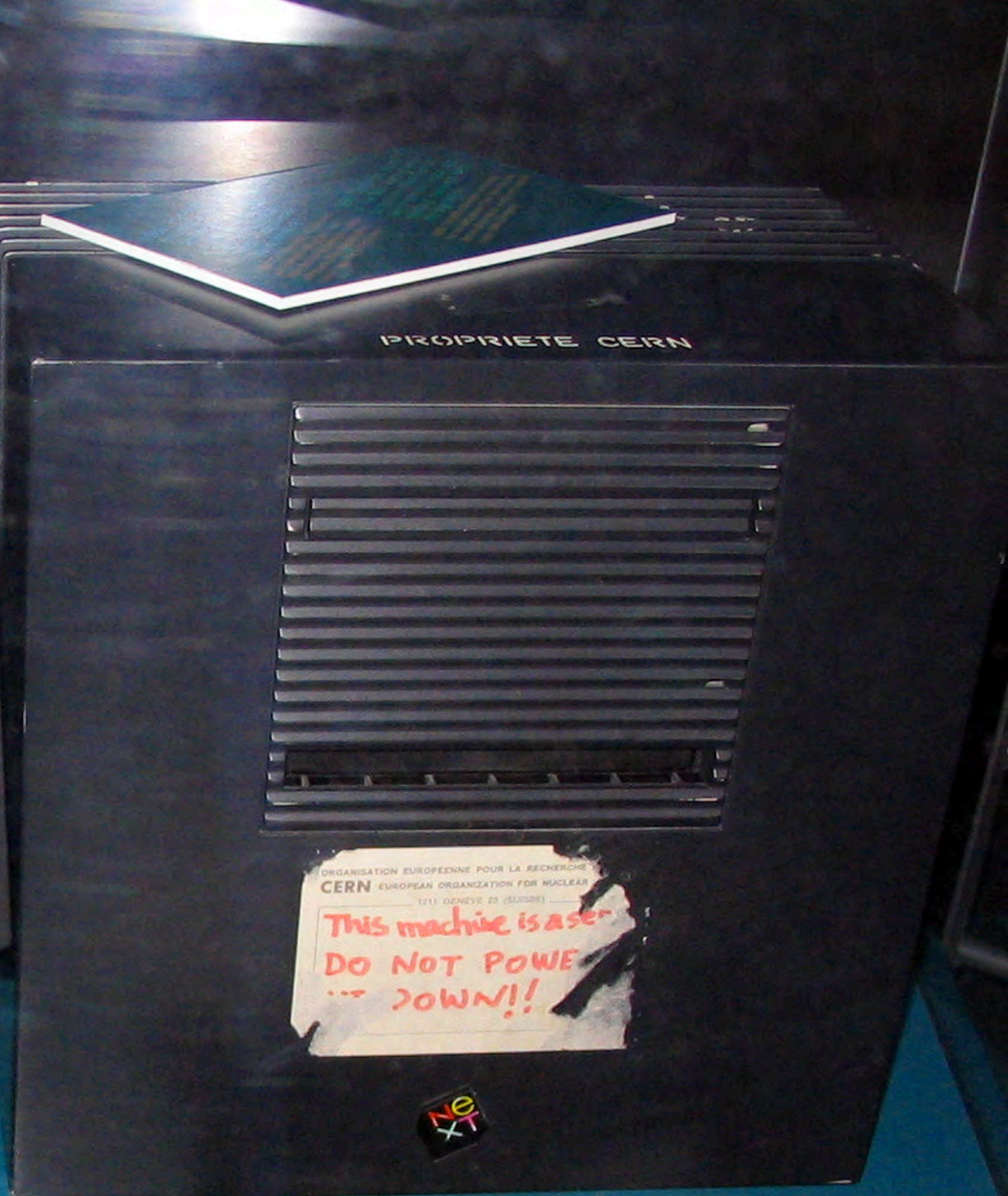
Rue des Ve

du Pré-Bouvier

Rue de la Berge

Rue Le





- WorldWideWeb
- Links
 - Info ▶ Mark all A
 - Navigate ▶ Mark selection M
 - Document ▶ Link to marked L
 - Find ▶ Link to New N
 - Edit ▶ Unlink Z
 - Links ▶ Link to file...
 - Style ▶ Help
- Print... p
- Page layout...
- Windows ▶
- Services ▶
- Hide h
- Quit q

Tim's Home Page

My home page

altas

The World-Wide Web Virtual Library: Subject Catalogue

The WWW Virtual Library

High-Energy Physics Information

CERN Welcome

This is a [type](#), and

Mail to [mailto:mas...](#)
to add po
[administr...](#)

See also

Aeronaut

Agricultu

[Anthropology](#)

[Archaeology](#)

[Asian Studies](#)

[Astronomy and](#)

[Bio Sciences](#)

European Laboratory for Part

Geneva, Switzerland

About the Laboratory:

- [on CERN info](#)
- [General information, divisions, groups and activities](#), [scientific committee](#)

Separate list.

Separate list.

CERN Experiments

Experiments

[WWW Support for Experiments](#)


[ALEPH](#) LEP experiment

[ALICE](#) A Large Ion Collider Ex
LHC

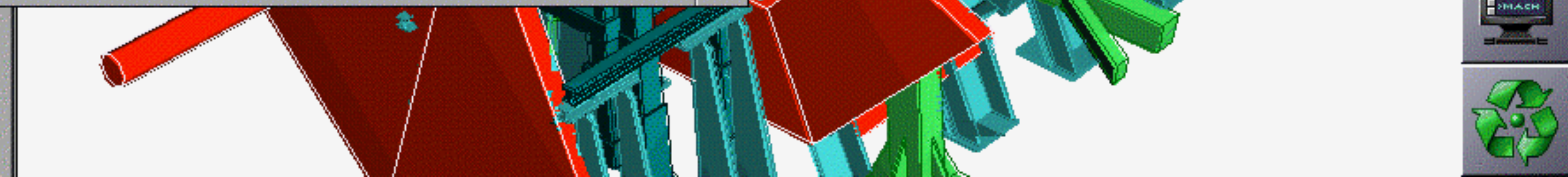
[ATLAS](#) A Toroidal LHC Appar

[CHORUS](#) WA95 - Neutrino oscill
CERN

[CMS](#) Compact Muon Soleno

- 
- 
- 
- 
- 
- 
- 
- 

Atlas



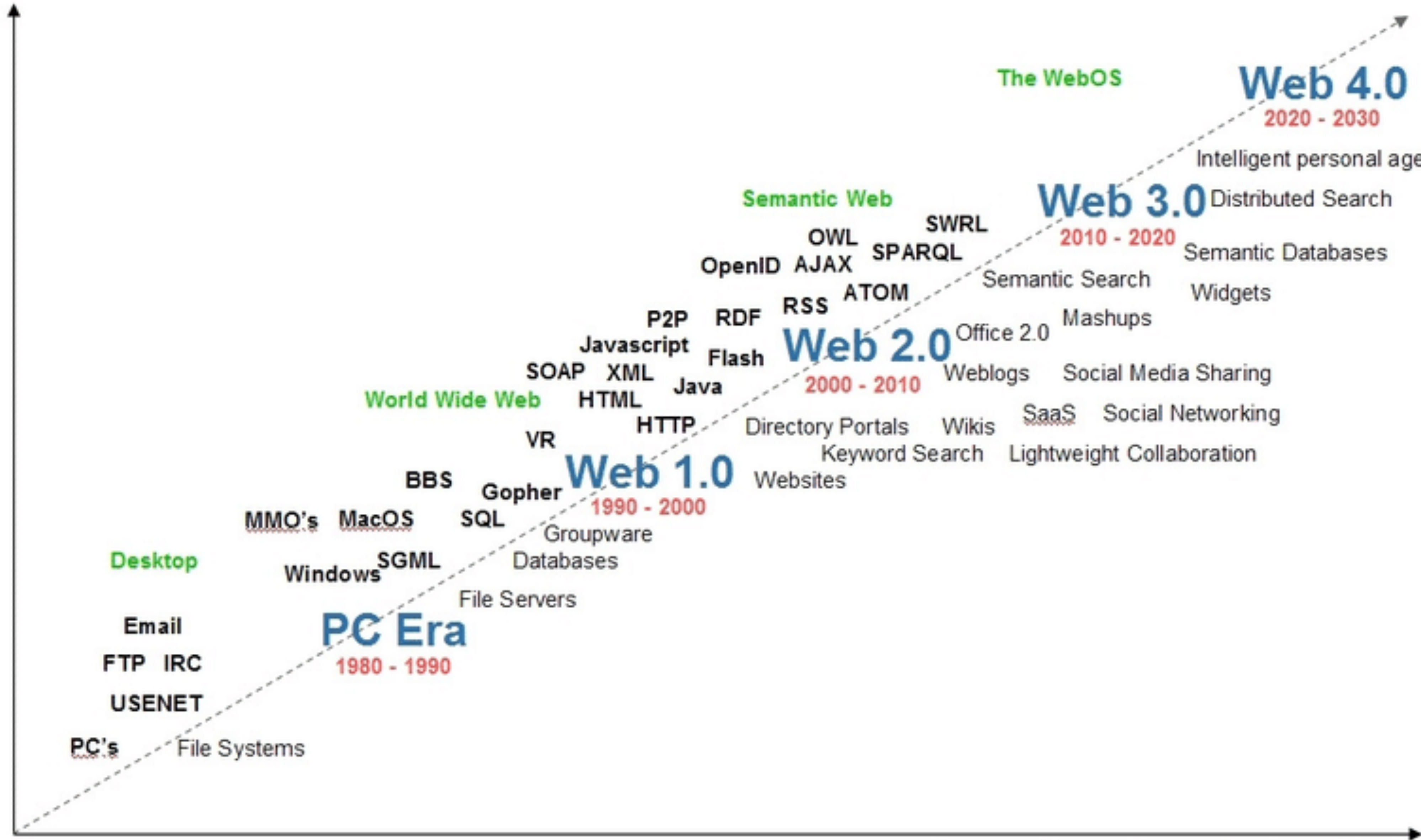
»Das World Wide Web ist eine großräumige Hypermedia-Initiative zur Informationsbeschaffung mit dem Ziel, den allgemeinen Zugang zu einer großen Sammlung von Dokumenten zu erlauben.«

– Tim Berners-Lee (1989)

Die Entwicklung des Web

- **Web 1.0 (1990-2000)**: Ansammlung von statischen Webseiten, die noch keine interaktiven Inhalte bereitstellten und vollständig durch *Hyperlinks* verbunden waren. So ergibt sich ein weltweites Netz aus Webseiten. 🏄
- **Web 2.0 (2000-2010)**: Als interaktive, benutzergenerierte Inhalte (User Generated Content) markieren Blogs, Wikis und Foren die Anfänge von sozialen Netzwerken. Mit der Interaktivität wurde der erweiterte Einsatz von Suchmaschinen möglich.
- **Web 3.0 (2010-202X)**: Das Semantic Web soll eine stärkere Vernetzung, Offenheit und Zugänglichkeit fördern. Machine Learning und Data-Mining stehen für eine höhere maschinengestützte Verständlichkeit der Inhalte.
- **Web 4.0 (202X-...)**: Künstliche Intelligenz...

Semantics of Information Connections



Semantics of Social Connections



Source: Radar Networks & Nova Spivack, 2007 - www.radarnetworks.com


- WorldWideWeb
- Links
- Info ▾ Mark all A
- Navigate ▾ Mark selection M
- Document ▾ Link to marked L
- Find ▾ Link to New N
- Edit ▾ Unlink Z
- Links ▾ Link to file...
- Style ▾ Help
- Print... p
- Page layout...
- Windows ▾
- Services ▾
- Hide h
- Quit q

Tim's Home Page

[My home page](#)

altas

The World-Wide Web Virtual Library: Subject Catalogue

 **The WWW Virtual Library**

This is a [type](#) ., an

Mail to [ma](#)
to add po
[administra](#)

See also

Aeronaut

Agricultur

[Anthropology](#)

[Archaeology](#)

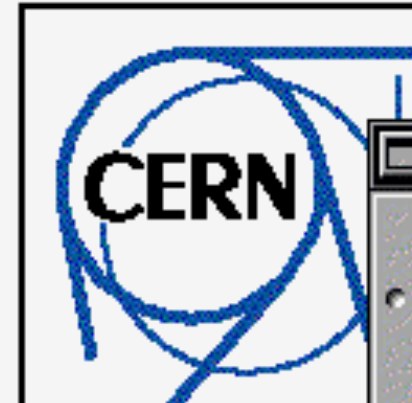
[Asian Studies](#)

[Astronomy and](#)

[Bio Sciences](#)

High-Energy Physics Information

CERN Welcome



European Laboratory for Part

Geneva, Switzerland

About the Laboratory:

- [on CERN info](#) .
- [General information, divisions, groups and activities](#) , [scientific committees](#)

CERN Experiments

Experiments

[WWW Support for Experiments](#)

[ALEPH](#) LEP experiment

[ALICE](#) A Large Ion Collider Ex
LHC

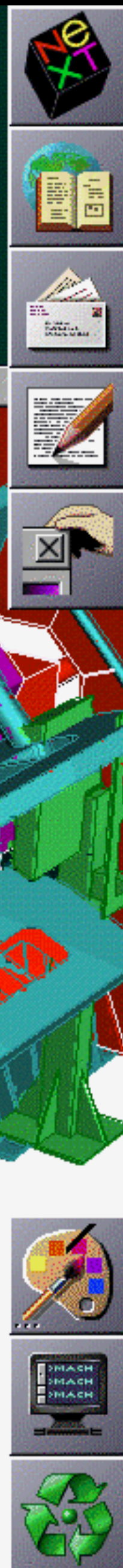
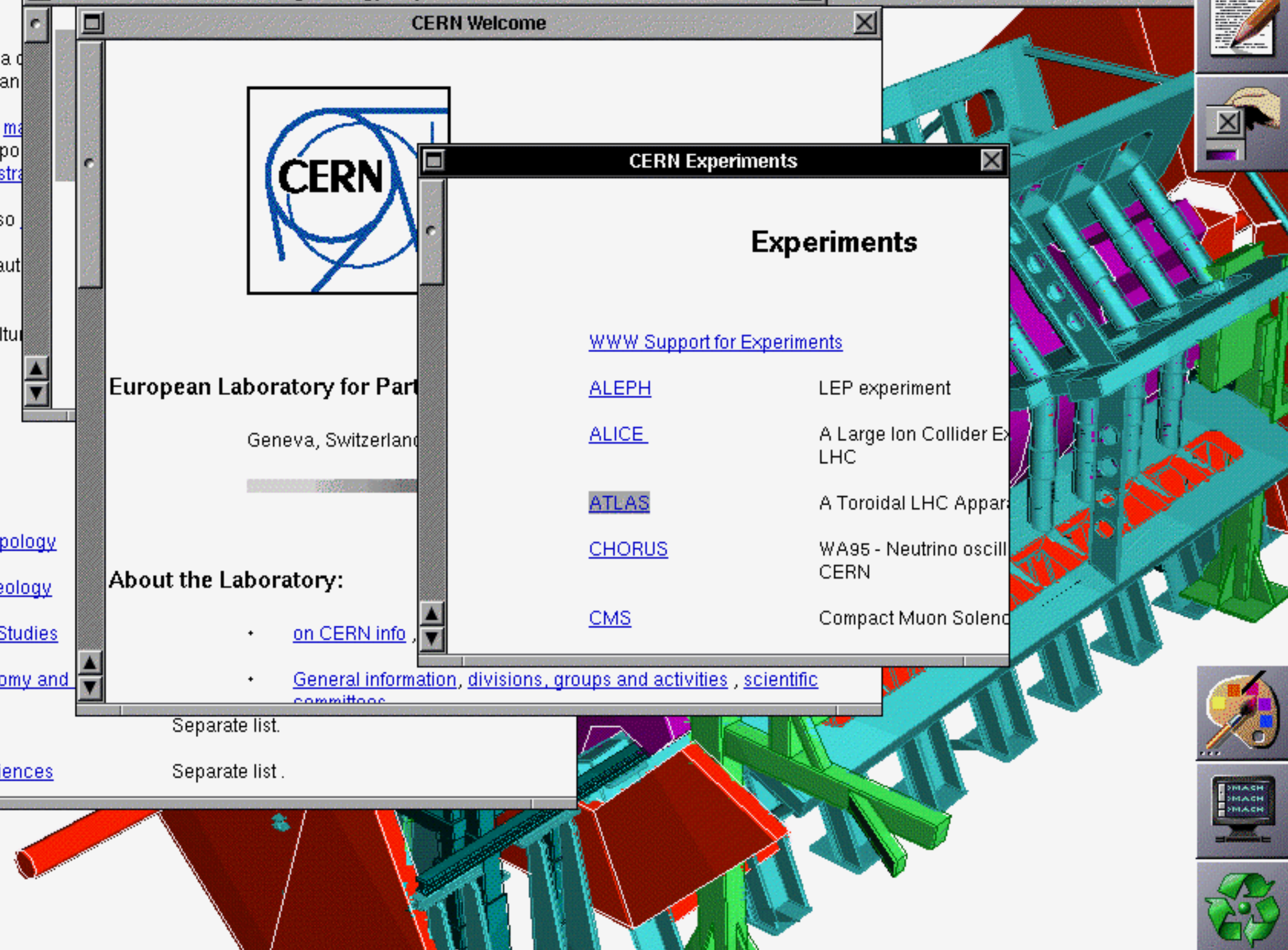
[ATLAS](#) A Toroidal LHC Appar

[CHORUS](#) WA95 - Neutrino oscill
CERN

[CMS](#) Compact Muon Solend

Atlas



1990

Archie Query Form



Search for:

Database: Worldwide Anonymous FTP Polish Web Index
Search Type: Sub String Exact Regular Expression
Case: Insensitive Sensitive

Do you want to look up strings only (no sites returned):
 NO YES

Output Format For Web Index Search: Keywords Only
 Excerpts Only
 Links Only



1992

Document Title: Welcome to PizzaNet
Document URL: http://www.pizzahut.com/



Welcome to PizzaNet!

PizzaNet is Pizza Hut's Electronic Storefront and is brought to you by Pizza Hut® and The Santa Cruz Operation®. You may click on the Pizza Hut logo on any page to submit comments regarding PizzaNet to webmaster@pizzahut.com

If you would like to order a pizza to be delivered, please provide the following information:

Name:

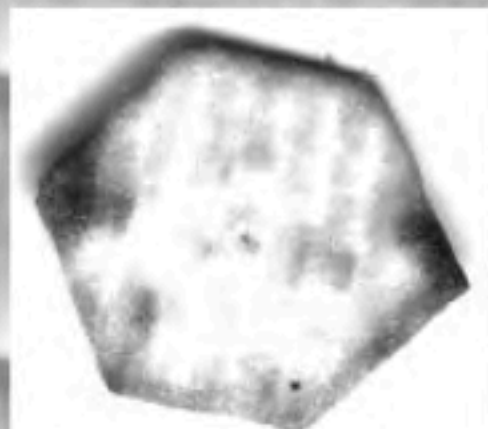
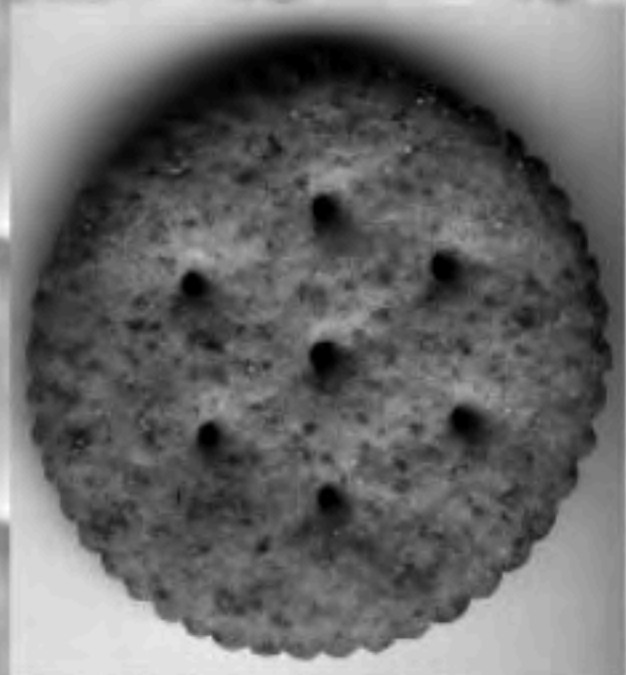
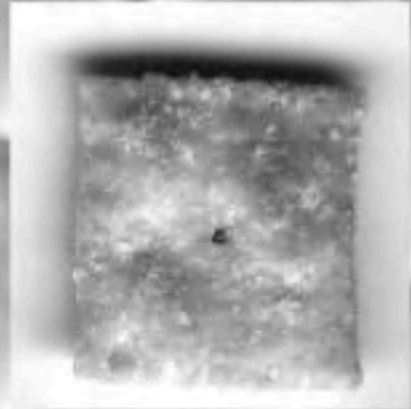
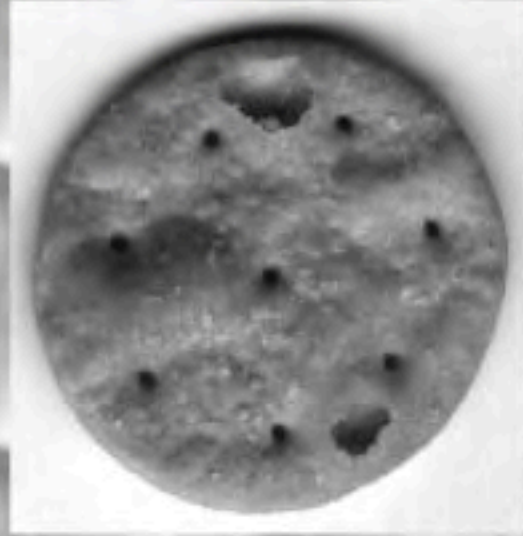
Home Address:

Home Phone #PP-PPP-PPPP

 (where we can reach you)

The Illustrated Guide to Crackers

Click on a [cracker](#) to find out more about it. (All crackers actual size when displayed at 100 dpi.)



Mitte der 90er

Have you ever clicked
your mouse right **HERE?**  **YOU
WILL**

[Wall](#)[Info](#)[Questions](#)[Share Profile](#)[Report/Block This Person](#)

Mark Zuckerberg

🏠 Founder and CEO at Facebook 🎓 Studied Computer Science at Harvard University 🏠 Lives in Palo Alto, California 🌐 Knows English, Mandarin Chinese 🏠 From Dobbs Ferry, New York 📅 Born on May 14, 1984

Education and Work

Employers



Facebook with Mike Schroepfer and 3 others
Founder and CEO - Feb 2004 to present - Palo Alto, California
Making the world more open and connected.

- **Open Graph** with Bret Taylor and 2 others
Apr 2010 to present
Helping to build a decentralized graph, give people control of their data and make all services interoperable.

College



Harvard University

Computer Science · Psychology

- **CS161. Operating Systems** with Matt Welsh and Andrew McCollum
- **CS182. Intelligent Machines** with Kang-Xing Jin and Andrew Boz Bosworth
- **CS121. Introduction to Computational Theory** with Greg Friedman and 2 others

 **Me at the zoo**

[javed](#) 7 videos



0:03 / 0:19    

[javed](#) — April 23, 2005 — The first video on YouTube, uploaded at 8:27PM on Saturday April 23rd, 2005. The video was shot by Yakov Lapitsk...

1,892,916
views

2005



kevin ✓ · 69 months ago

+ Follow



♥ 52.3k likes 💬 30.4k comments

Instagram

2010



We use cookies

Please, accept these sweeties
to continue enjoying our site!

Mmm... Sweet!

Nope... I am on a diet 🙄

Heute

Schnelles & komplexes
Explorieren

Websites

Apps

Geradliniges & intuitives
Konsumieren

Websites sind tot, oder?



Digital Touchpoints

Digital Touchpoints

Das »neue Ökosystem«

oder: wie spielen die Kanäle gut zusammen?

